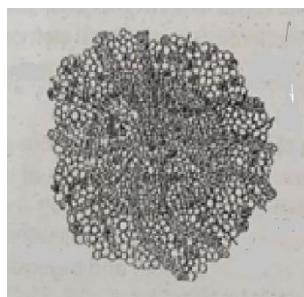
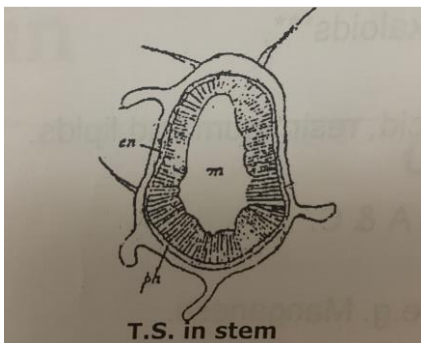
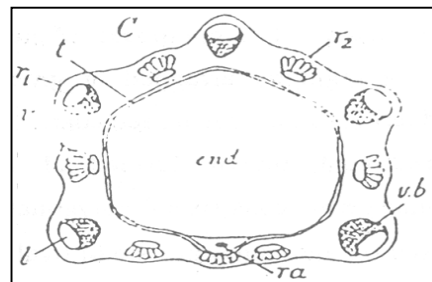
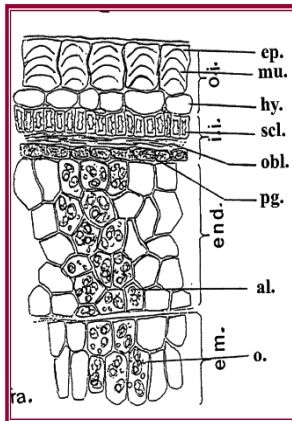
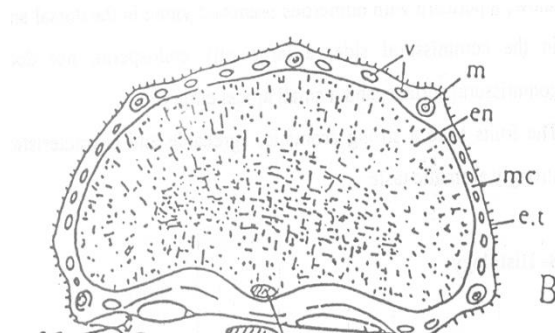
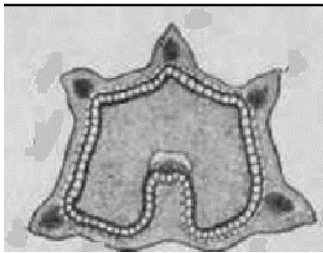
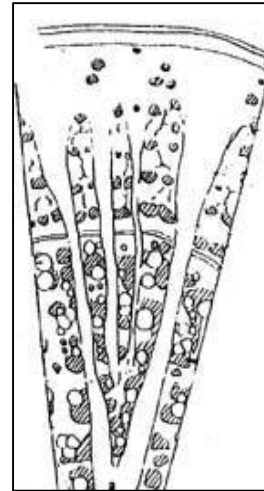
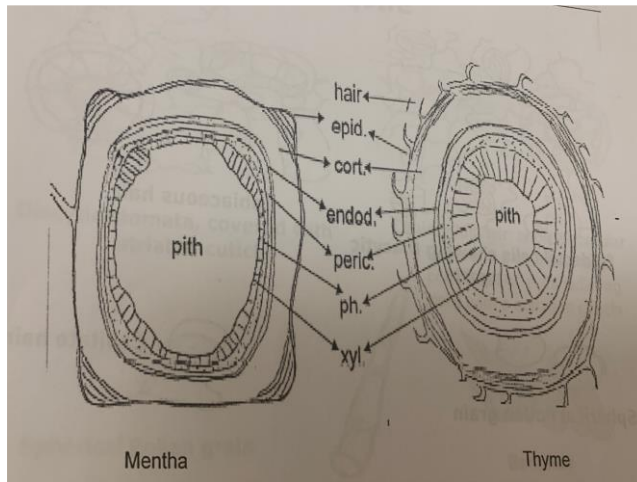


Revision- PHG 112

- 1- In a tabular form, suggest a drug (name, part used, active constituent and chemical test) used for the treatment of each of the following symptoms
- 2- Correct the underline word in each sentence by a suitable term
- 3- Suggest the appropriate term (words) used to indicate each of the following statements
- 4- Justify(rationalize) each of the following statements:

5-Label the following T.S and identify the corresponding drug





6- Identify the following key elements, and answer the given questions

Powders: Linseed- foenugreek- anise- mentha- lobelia- thyme- cannabis- ginger- liquorice- rhubarb

7- Compare between each pair of the following.

Ammi visnaga and Ammi majus (active constituents & uses)

Lobelia and mentha (active constituents & uses).....

8-Match Column A with the appropriate statements from columns B & C. Re-write Column A with the chosen answers in your answer paper