



# MSA UNIVERSITY

جامعة أكتوبر للعلوم الحديثة والآداب

# Pharmacognosy

## PHG112

3 GOOD HEALTH  
AND WELL-BEING



4 QUALITY  
EDUCATION





# Course Instructors

***Prof. Dr. Mahitab Helmi***

Professor of Pharmacognosy

[mahelmy@msa.edu.eg](mailto:mahelmy@msa.edu.eg)

***Dr. Ibrahim Ezz***

Lecturer of Pharmacognosy

[iezz@msa.edu.eg](mailto:iezz@msa.edu.eg)

***Dr. Passant Mohamed***

Lecturer of Pharmacognosy

[pabdelbaki@msa.edu.eg](mailto:pabdelbaki@msa.edu.eg)

**Office: G42**

# References

Author	Date	Title	Publisher	ISBN
Michael Heinrich, Joanne Barnes, Simon Gibbons, Elizabeth M. Williamson.	2012	Fundamentals of Pharmacognosy and Phytotherapy	Elsevier Health Sciences	0702052310, 9780702052316
Biren Shah, Avinash Seth	2012	Textbook of Pharmacognosy and Phytochemistry	Elsevier Health Sciences	8131232603, 9788131232606
William Charles Evans	2009	Trease' s Pharmacognosy, 16 <sup>th</sup> edition	Elsevier Health Sciences	0702041890, 9780702041891



# Lecture 5

## *Fruits Having Nutraceutical Applications*

# Interactive teaching methods and activities



QUIZIZZ



**socrative**

# Learning Outcomes

By the end of this lecture, students should be able to:

## 1. Remembering (Knowledge)

- **Define** nutraceutical fruits and their importance in pharmacognosy.
- **Identify** the botanical sources and families of important umbelliferous fruits
- **List** the major active constituents present in anise, star anise, coriander, and fennel.
- **Recall** the main pharmacological uses of these fruits in pharmaceutical and nutraceutical applications.

## 2. Understanding (Comprehension)

- **Describe** the macroscopic and powdered characteristics of anise fruit.
- **Explain** the role of volatile oils (e.g., anethole, linalool, fenchone) in the pharmacological activity of umbelliferous fruits.
- **Summarize** the medicinal uses of anise, star anise, coriander, and fennel in digestive and respiratory disorders.

# Learning Outcomes

By the end of this lecture, students should be able to:

## 3. Applying (Application)

- **Use** diagnostic microscopic characters (vittae, endosperm fragments, hairs) to identify powdered anise fruit.
- **Apply** chemical tests to detect adulteration of anise with hemlock fruits.

## 4. Analyzing (Analysis)

- **Differentiate** between anise fruit and its common adulterant hemlock based on morphology, chemical constituents, and toxicity.
- **Compare** the chemical composition and therapeutic uses of anise, coriander, fennel, and star anise.

# Learning Outcomes

By the end of this lecture, students should be able to:

## 5. Evaluating (Evaluation)

- **Evaluate** the medicinal importance of volatile oils present in umbelliferous fruits for pharmaceutical preparations.
- **Assess** the health risks associated with toxic adulterants such as hemlock.

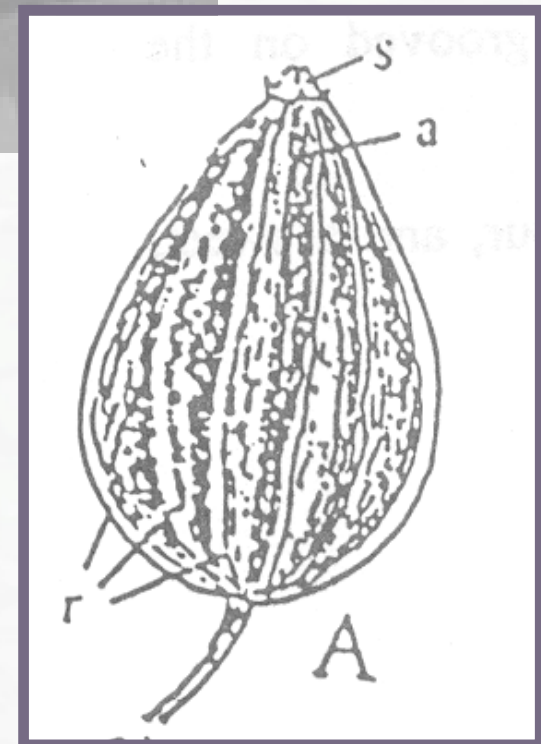
## 6. Creating (Synthesis)

- **Construct** comparison tables summarizing the source, constituents, and uses of major umbelliferous fruits.
- **Develop** a systematic approach for the pharmacognostic identification of nutraceutical fruits.

# Anise

**Origin: The dried ripe fruit of *Pimpinella anisum* L. (Fam. Apiaceae).**

**It contains not more than 3 % of foreign organic matter, and yields not less than 1.5 % v/w of volatile oil**



# Powder:

Color: Powdered Anise is greenish-brown or yellowish-brown,  
Odour: having a strong aromatic agreeable  
Taste : a sweet strongly aromatic.

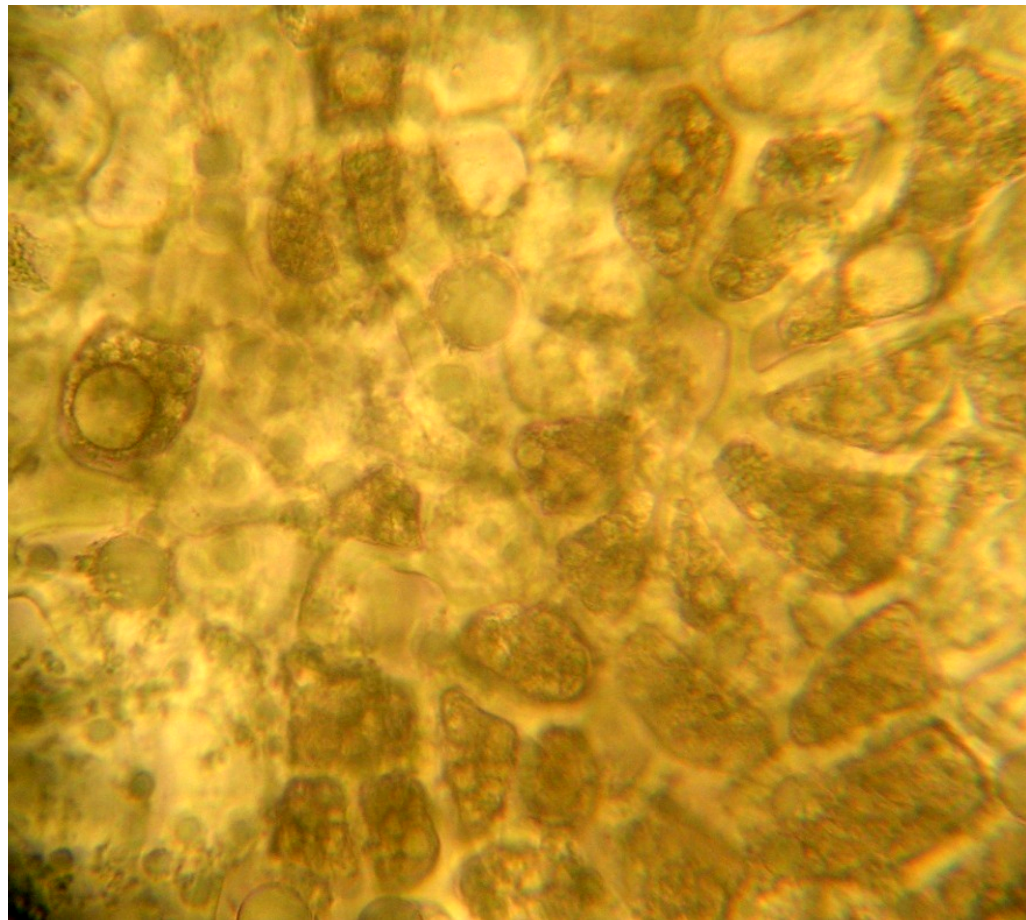
1- Fragments of pericarp with yellowish-brown branching vittae, usually crossed by the cells of the parallel endocarp.



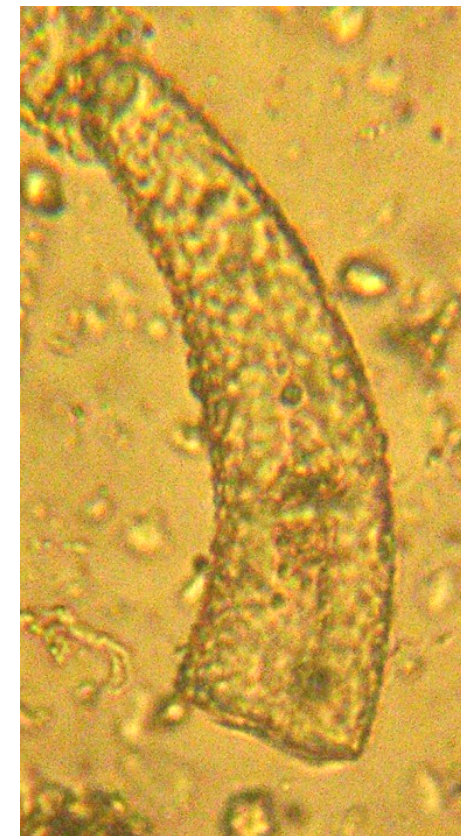
# Powder:

2-

**Numerous  
fragments  
of**



**3- Numerous  
warted simple hairs**



# Powder:

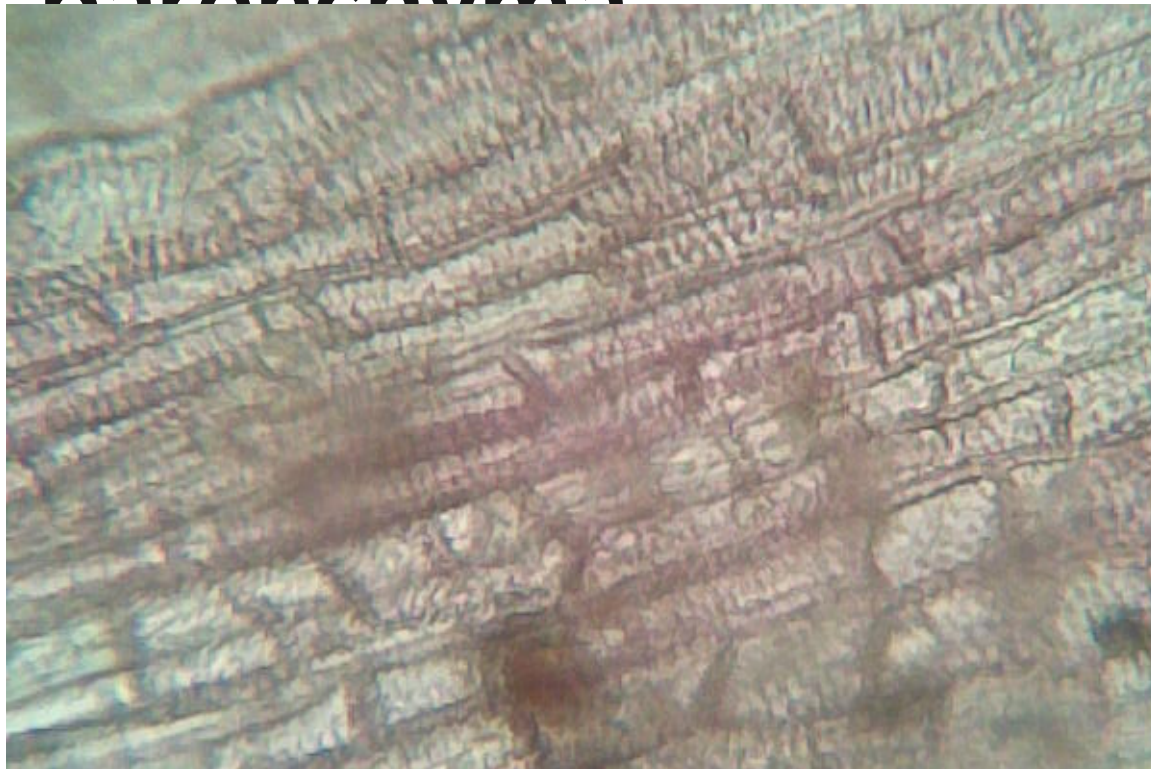
4- Few fibers and

very

scanty pitted

lignified

parenchyma

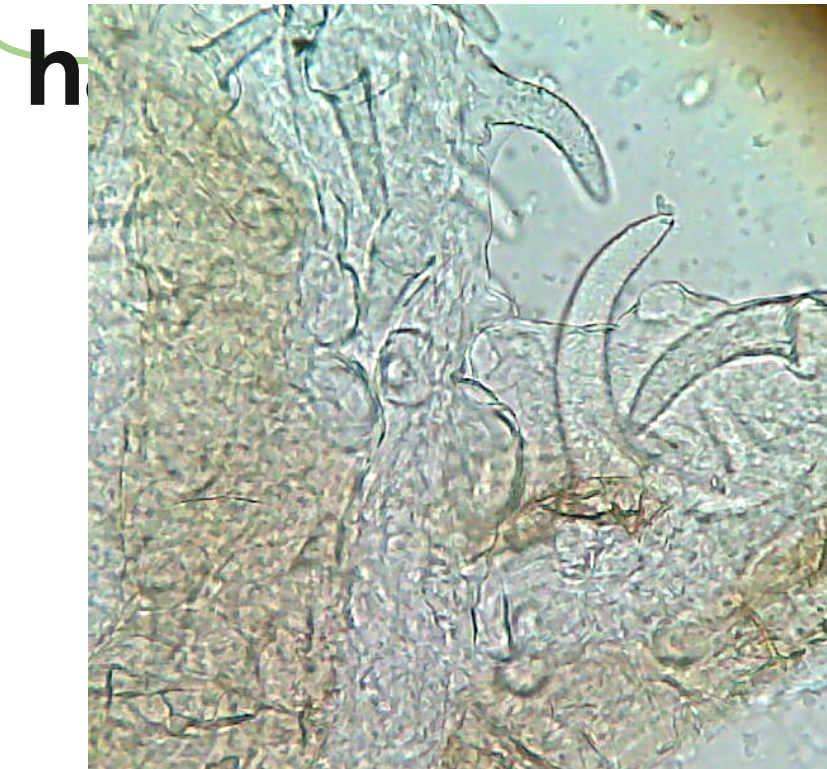


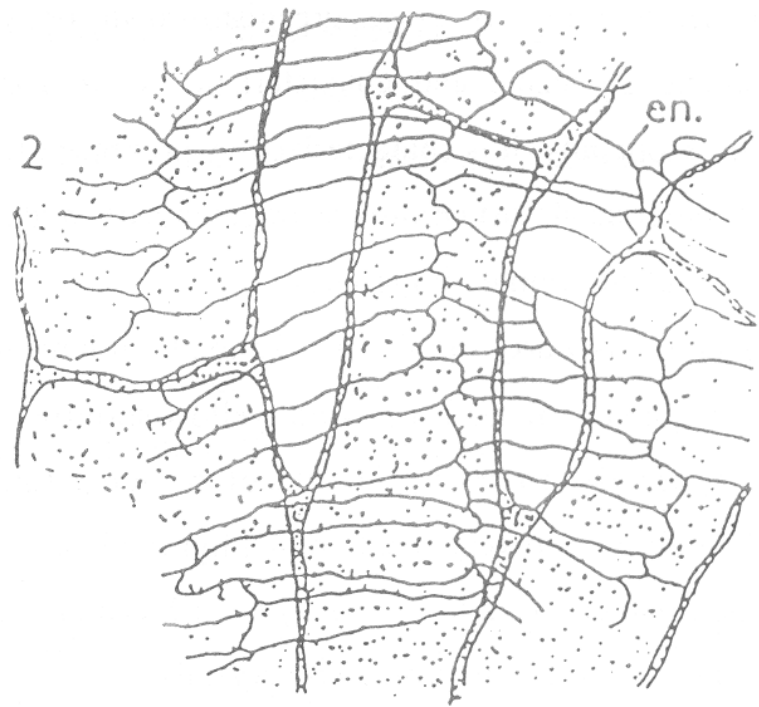
5- Epicarp cells

with

striated cuticle

and non glandular

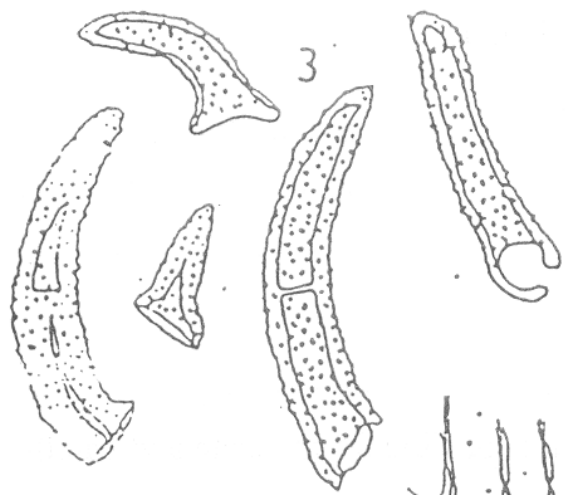




**Branched vittaes crossed by parallel endocarp**



**Endosperm**



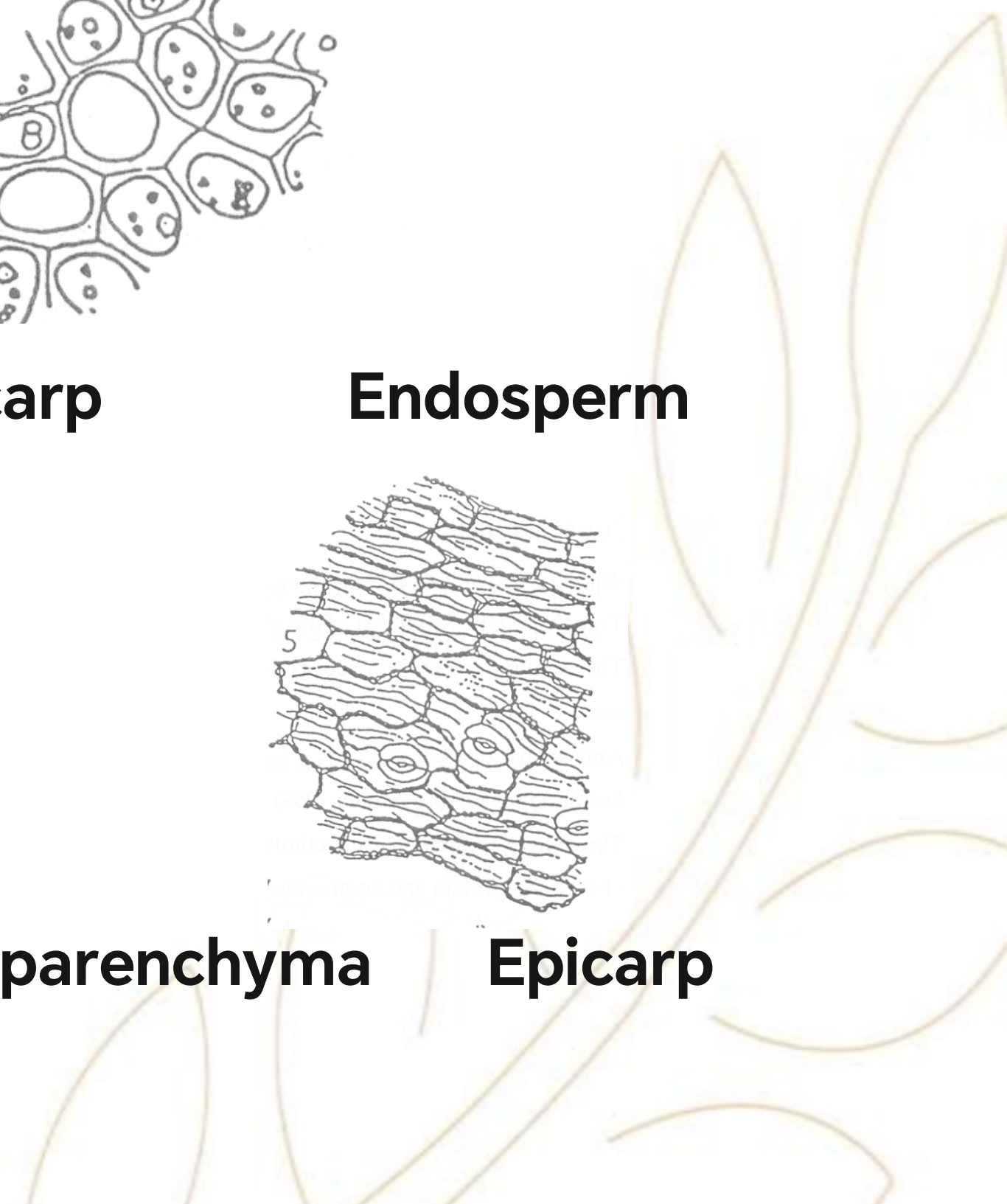
**Non glandular hairs**



**Pitted lignified parenchyma**



**Epicarp**



# Active constituents:

## 1-Essential oil (1.5-5%) containing:

- Trans- anethole (80-90%) ,responsible for the taste and smell.
- Methyl chavicol (1:2%), which also smells like anise but doesn't taste sweet.
- Anisaldehyde (1%).
- Sesquiterpene hydrocarbons (2%) and less than (1%)  
monoterpene hydrocarbons
- The dimers of anethole (dianethole) and anisaldehyde  
(Dianisidine)

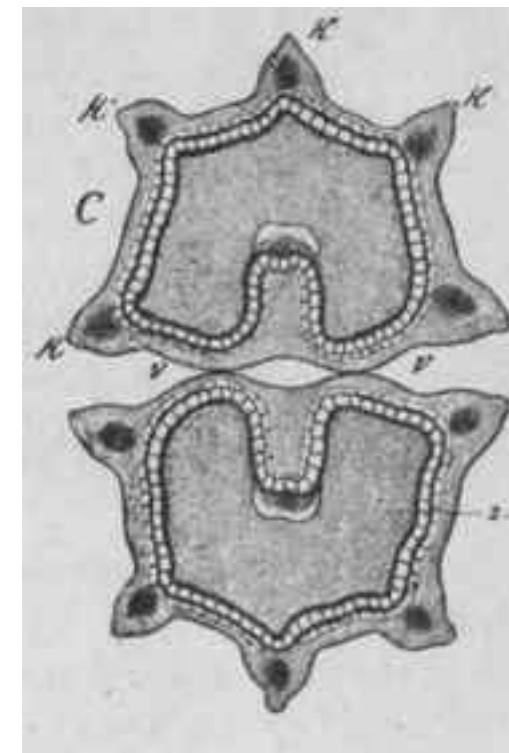
2- Fixed oil & proteins

3- Coumarins

## Uses:

- 1- For respiratory tract infections, cough and bronchitis**
- 2-Carminative & relieves colic in children.**
- 3- Has a sedative action.**
- 4- In folk medicine, lactagogue, emmenagogue**
- 5- Oil is also employed in food & drink industry as flavoring agent**

# Anise Adulteration



**Anise may be adulterated by Hemlock fruits [*Conium maculatum* F. Apiaceae]**

# Comparison between Anise & Hemlock

<b>Anise</b>	<b>Hemlock</b>
<ul style="list-style-type: none"><li><input type="checkbox"/> Larger in size</li><li><input type="checkbox"/> Strong aromatic, agreeable odor</li><li><input type="checkbox"/> Branched vittae, non glandular hairs</li><li><input type="checkbox"/> Essential oil, Fixed oil, protein &amp; coumarins</li><li><input type="checkbox"/> Test for volatile oil</li></ul>	<ul style="list-style-type: none"><li><input type="checkbox"/> Smaller in size</li><li><input type="checkbox"/> Slight odor and taste</li><li><input type="checkbox"/> Absence of vittae and hairs</li><li><input type="checkbox"/> Coniine alkaloid which is highly toxic</li><li><input type="checkbox"/> Test for coniine</li></ul>

# Actions of Coniine

- Coniine is a poisonous alkaloid found in poison and contributes to hemlock's fetid (mice-like) smell.
- It is a neurotoxin which disrupts the peripheral nervous system.
- Death is caused by respiratory paralysis (Socrates was put to death by means of this poison in 399 BC.)
- A poisoned person will recover if artificial ventilation (breathing) is maintained until the toxin is removed from the receptor.

# Detection:

**1-by chemical test for alkaloids ( Mayer's test)**

**2-Rubbing the fruits with solution of caustic alkali, it develops a strong mice-like odor**

# Star Anise

**Origin: The ripe fruits of *Illicium verum* or (Chinese star anise) F. Magnoliaceae**

**Japanese star anise (*Illicium anisatum*), a similar tree, is highly toxic and inedible**

**The fruit is an aggregate of follicles**



## **Active Constituents:**

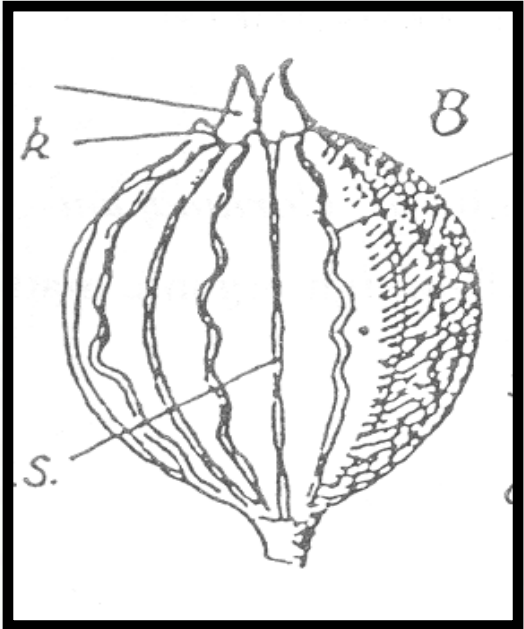
**Volatile oil mainly anethole more than 4.5%., which is the same ingredient that gives the anise (*Pimpinella anisum*) its distinctive odor**

## **Actions and uses:**

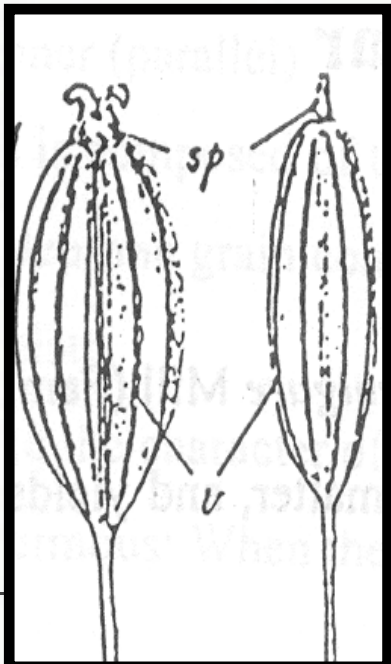
- 1- Expectorant & in treatment of hard dry cough, bronchitis & in whooping cough**
- 2-For digestive tract problems including upset stomach, loss of appetite & relieving colic in babies**
- 3-Antimicrobial &Antiviral activity**
- 4- Oil is also employed in food & drink industry as flavoring agent**

**It is a good source of shikimic acid, which is used in the manufacture of oseltamivir (Tamiflu), a flu treatment**

# Coriander

Name	Active constituents	Uses
<p><b>Coriander</b></p> 	<ul style="list-style-type: none"> <li>- <u>Volatile oil</u> containing linalool, <math>\alpha</math> and <math>\beta</math> pinene, <math>\gamma</math>-terpenene, p-cymene, limonene, anethole, camphor, geraniol and geranyl acetate.</li> <li>- <u>Fixed oil</u> (up to 26%); its main fatty acids are oleic and linolenic acids</li> <li>- <u>Flavonoid glycosides</u> (quercetin, isoquercetin and rutin)</li> <li>- Proteins</li> </ul>	<ol style="list-style-type: none"> <li>1- <u>Spice &amp; flavoring agent.</u></li> <li>2- <u>spasmolytic, carminative</u> added to purgative preparations to prevent the gripping effect</li> <li>3- <u>It has strong lipolytic activity</u></li> <li>4- The high percent of fats and protein makes distillation residues suitable for animal feed</li> </ol>

# Fennel

Name	Active constituents	Uses
<p><b>Fennel</b></p> 	<p>1- <u>Volatile oil</u> (4 - 6 %), containing <u>fenchone, estragol</u> (methyl chavicol)                  2- <u>Fixed oil</u> (17-20%)                  3- <u>Flavonoids</u> (Kaempferol, quercetin)                  4- <u>Protein</u> (16-20%) &amp; minerals (relatively high Ca and K)</p>	<p>1- <u>Carminative</u>. It regulates the <u>peristaltic function of GIT</u> and relieves the associated <u>pain and cramping</u>. Used <u>with purgatives</u> to <u>alleviate their gripping effect</u>                  2- <u>Lactagogue</u>                  3- <u>Clears the lungs</u>                  4- <u>Weight loss</u></p>

# *Google notebook link:*

<https://notebooklm.google.com/notebook/5b8c9885-3660-4f77-a955-b3a75113c313>



THANK  
YOU!