

# Lab 1

## Pharmacognosy

### PHG112



The background is a dark blue gradient. On the left side, there are several overlapping, curved bands of varying shades of green, creating a sense of depth and movement. On the right side, there is a stylized, light-colored outline of a leafy branch, with several leaves of varying sizes and shapes extending upwards and to the right.

# Faculty of **Pharmacy**

## Vision

The Faculty of Pharmacy of October University for Modern Sciences and Arts is a pioneer in tutelage, scientific research, and community service at the local and regional levels, and holds an advanced position among its counterparts in international Pharmacy subject ranking

### الرؤية

- كلية الصيدلة جامعة أكتوبر للعلوم الحديثة و الآداب كلية رائدة في مجال التعليم و البحث العلمي و المشاركة المجتمعية على المستوى القومي و الإقليمي و لها ترتيب متقدم في التصنيف العالمي لكليات الصيدلة

# Mission

•The Faculty of Pharmacy of October University for Modern Sciences and Arts is nationally accredited, has British partnership, and is committed to producing graduates who are able to compete in national and international job markets and entrepreneurship, and to be an effective member of the medical team providing best medical care, while heeding professional ethics, through an outstanding academic programme and proficient academic staff. The faculty is devoted also to provide effective community services, and exceptional applied scientific research.

## الرسالة

- كلية الصيدلة جامعة أكتوبر للعلوم الحديثة والآداب معتمدة محليا، بشراكة بريطانية، تلتزم بتخريج صيدلي قادر على المنافسة في أسواق العمل المحلية و الدولية و قيادة الأعمال، و أن يكون عضو فعال في الفريق الطبى بتقديم أفضل رعاية صحية، مراعيأ أخلاقيات المهنة، من خلال برنامج تعليمي متميز و أعضاء هيئة تدريس أكفاء، وكذلك تلتزم الكليه بتقديم خدمات مجتمعية فعالة و أبحاث علمية تطبيقية متميزة.

# Pharmacognosy PHG112

Items	Marks
Quizzes	5 Marks
Assignment	15 Marks (10+5)
Practical Exam(s)	40 Marks (15+15+10)
Mid Term Exam	30 Marks
Final Exam	60 Marks
<b>TOTAL</b>	<b>150 Marks</b>





# Pharmacognosy PHG112

## RULES

- **Lab evaluation --10 marks**
- **Attendance**
  - (only 15 min late is allowed)
  - (sign for yourself).
- **Lab coat:**
  - (not allowed to be in the lab without it).
  - (take it on and off before and after you get to the lab).
- **Drawing:**
  - (during the lab time).
  - (in a specific note using pencil).



# Pharmacognosy PHG112 RULES



- **Lab evaluation --10 marks**
- **Work place and tools:**

- (waste disposal  don't throw anything in the Sink).
- (microscope  **switch it OFF** ).

- **Behavior:**

- (may get you to loose the whole 5 marks).



# Pharmacognosy

## PHG112

Organs:

**Seeds**

**Herbs**

**Fruits**

**Subterraneanians**

**Unorganized**







# Definition:

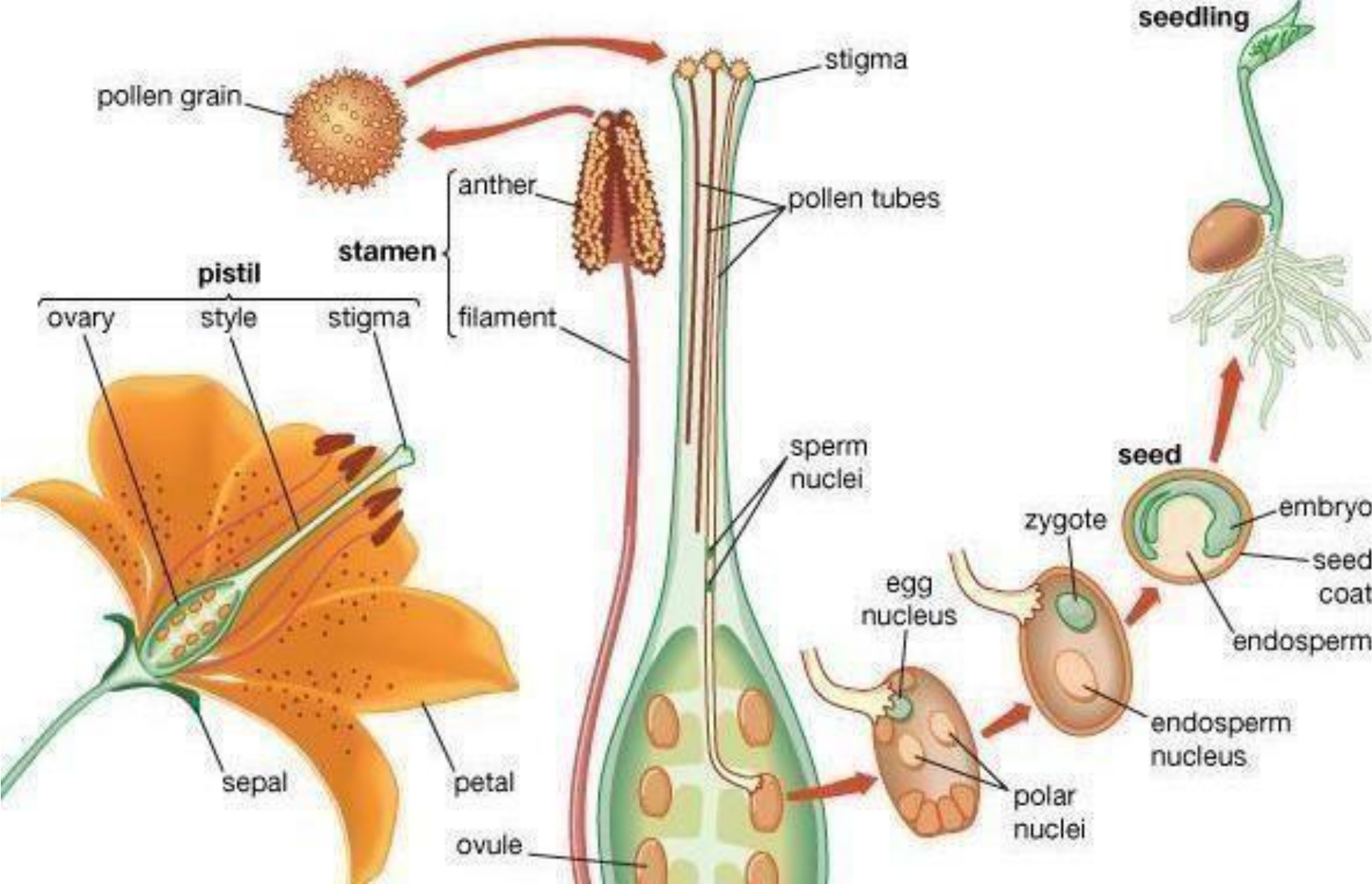
**Mature fertilized ovule that contains an embryo.**

**Its function is to facilitate transportation and to ensure continuation and distribution of the plant.**

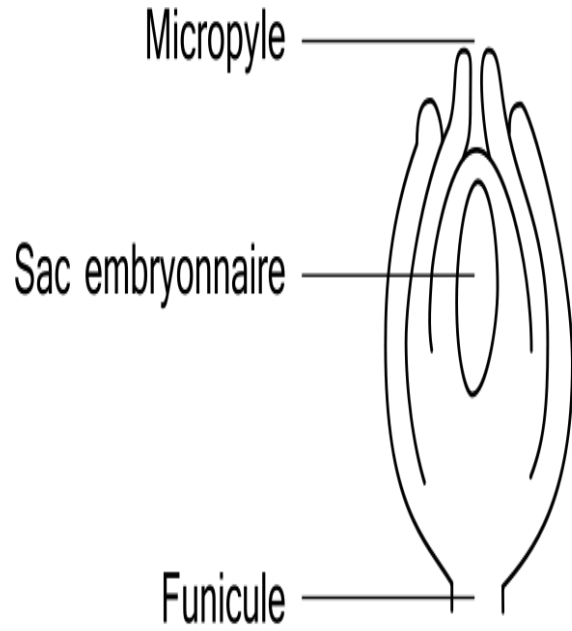




# Seed formation:



# Types of ovules:



Ovule  
Orthotrope



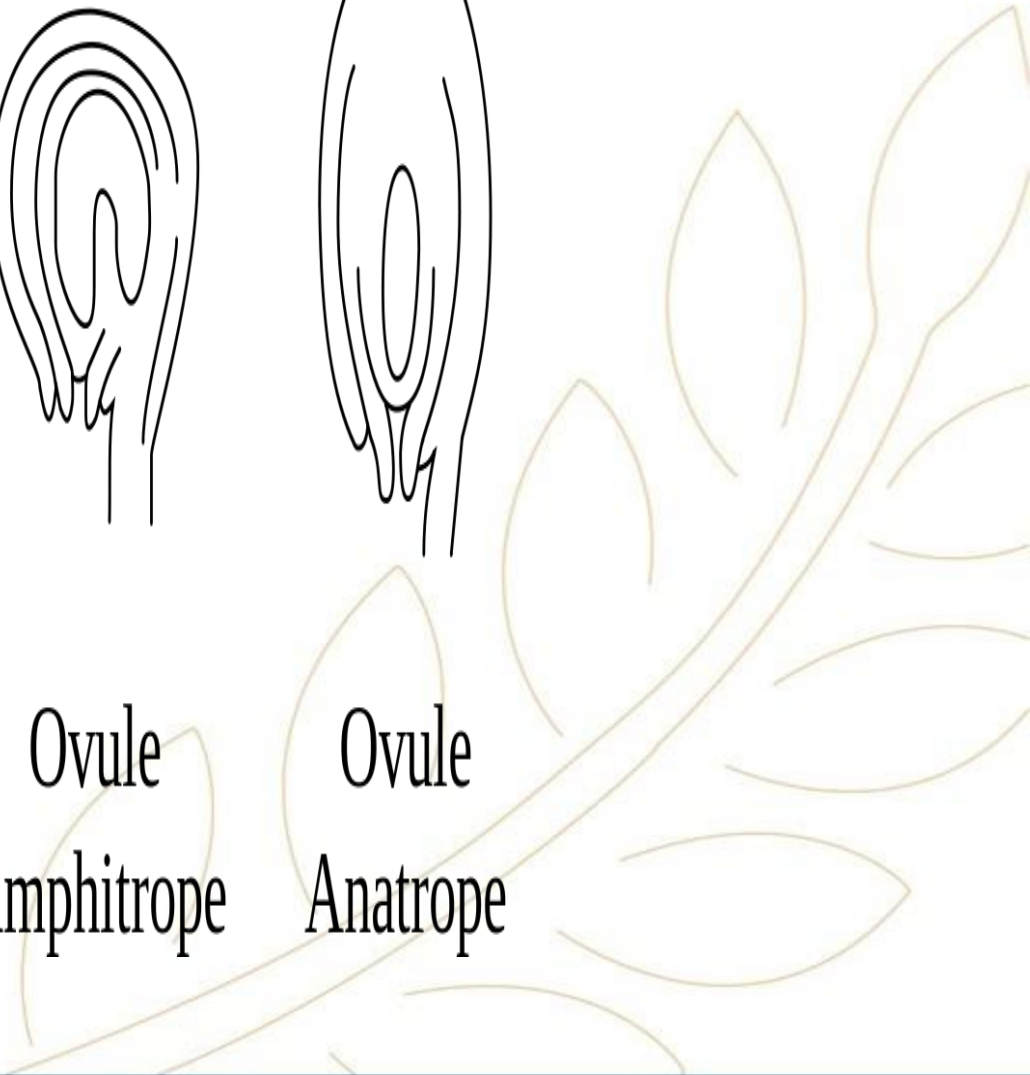
Ovule  
Campylotrope



Ovule  
Amphitrope

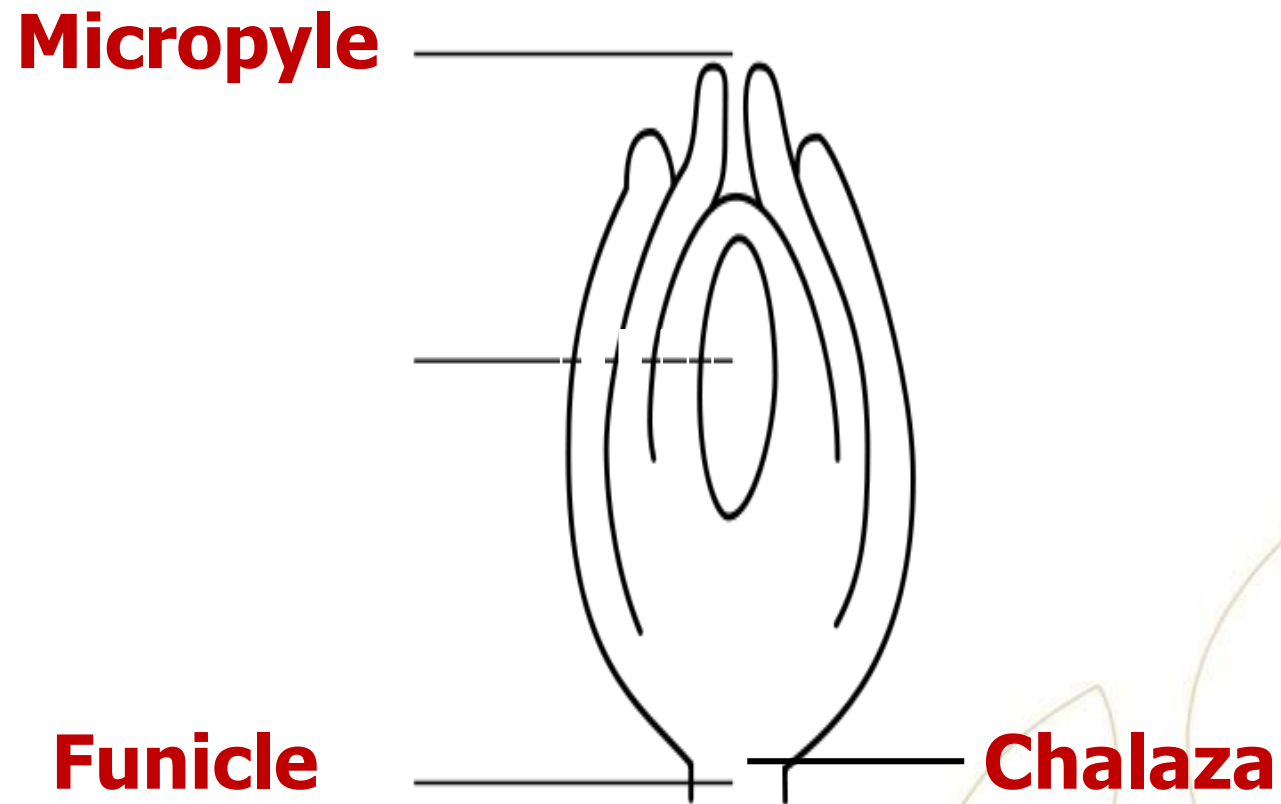


Ovule  
Anatropous



## Types of ovule:

### 1-Atropous ovule(Orthotropous).



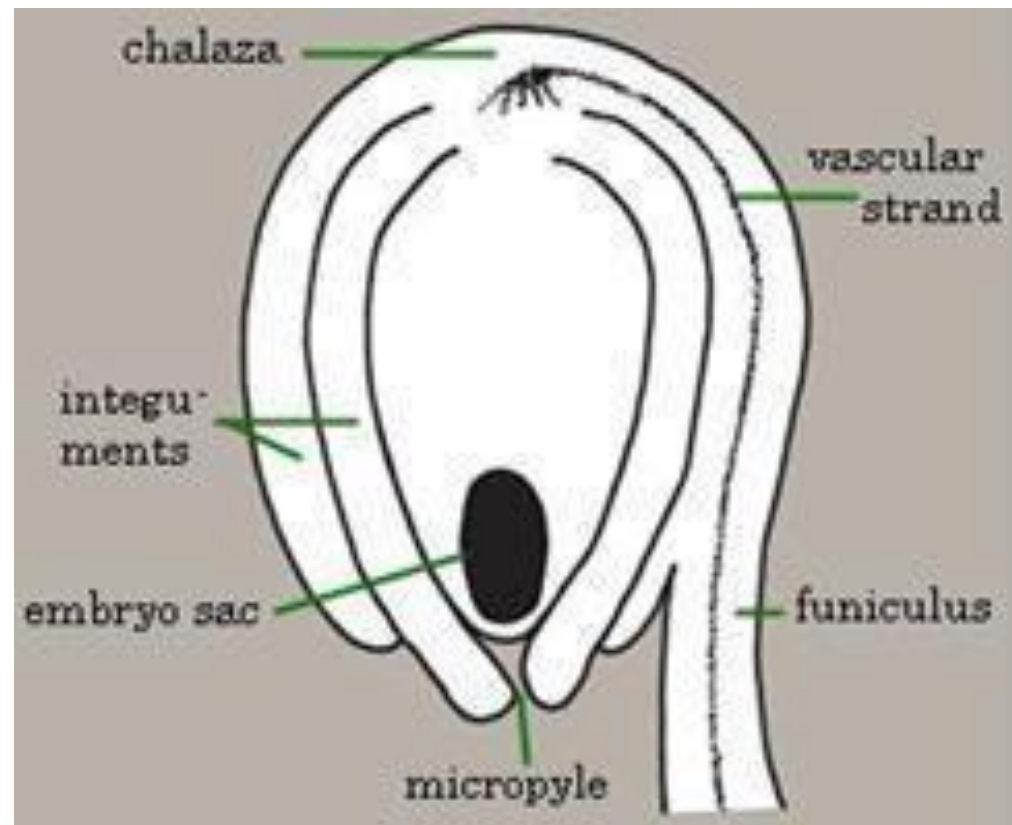


## Types of ovule:

### 2-Anatropous ovule:

#### Inverted ovule

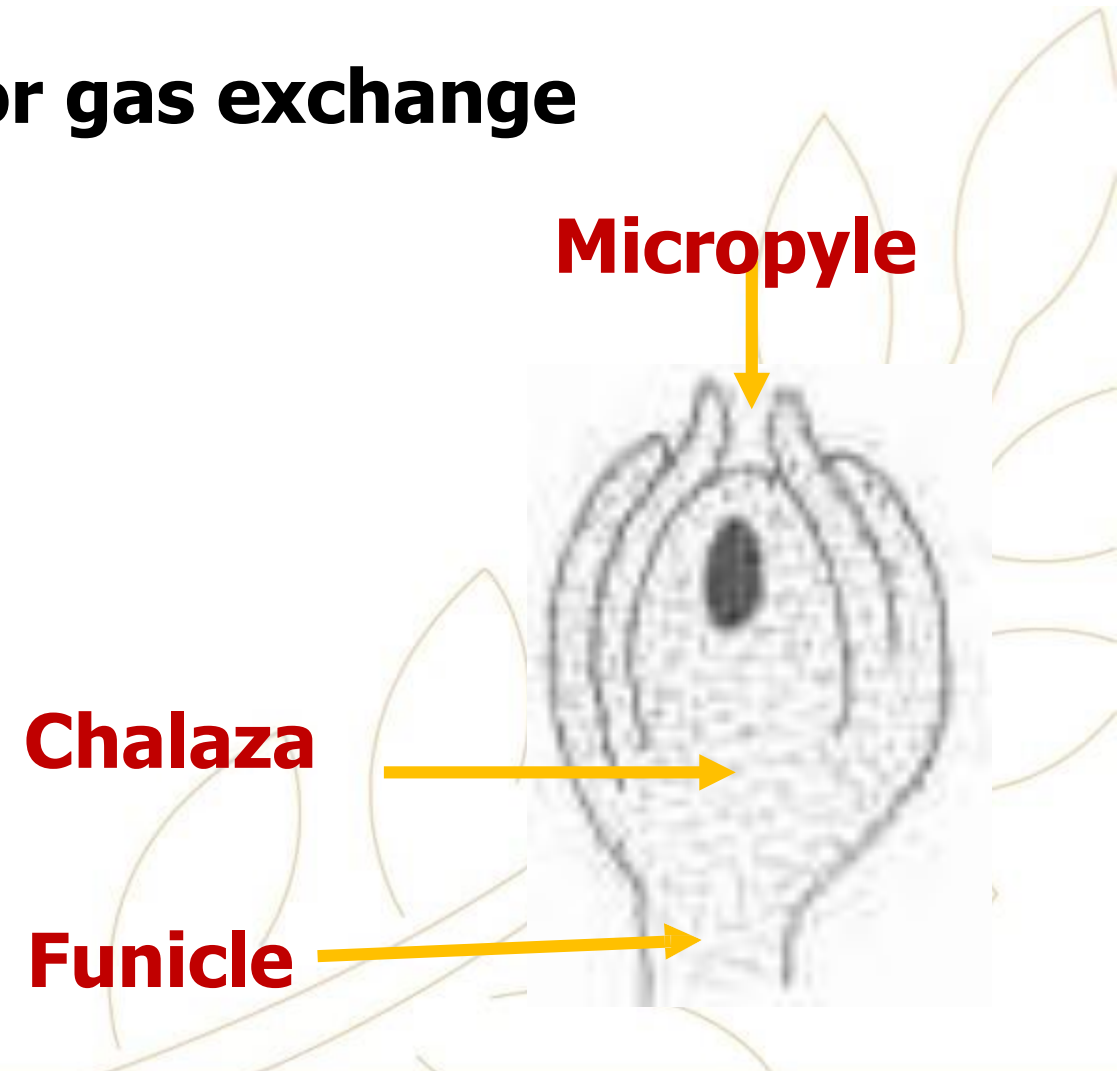
□ Raphe present half circum (Zingiberaceae, Linaceae).



## Types of scars:

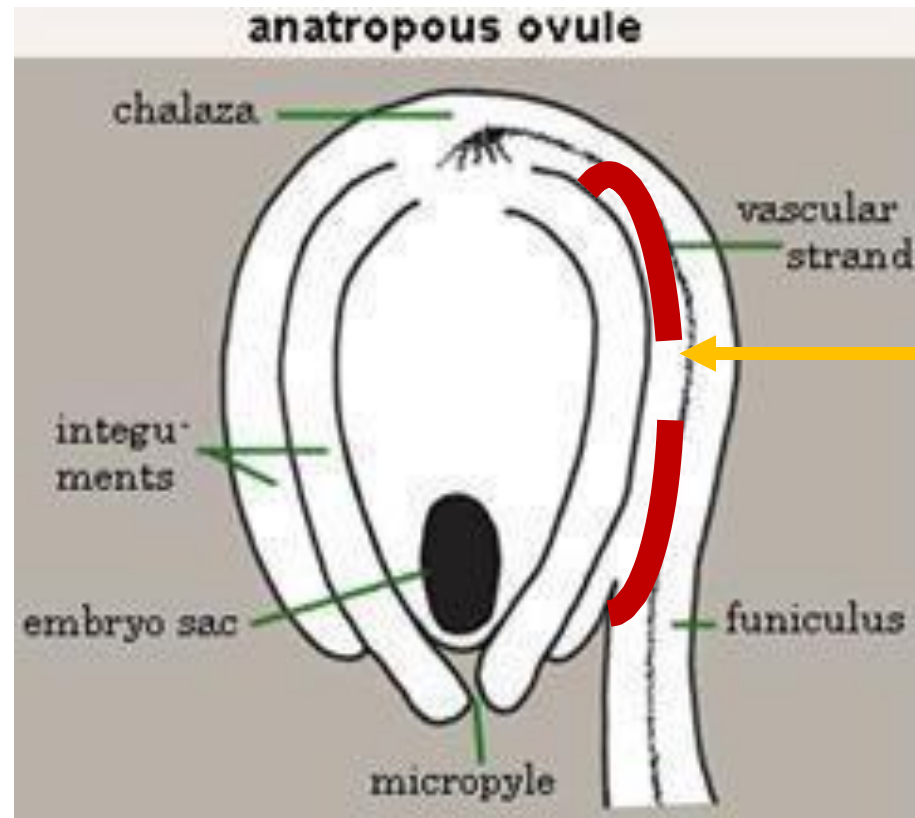
**1-Hilum:** Scar left after removal of **seeds from its funicle**

**2-Micropyle:** Pore in the seed coat for gas exchange



## Types of scars:

**3-Raphe:** Ridge of vascular tissue on the seed coat or line running from hilum to chalaza.



**Raphe**

# Typical layers of seed:

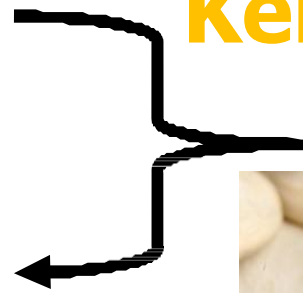
**1 Testa (seed coat)**

**2 Perisperm**

**3 Endosperm**

**4 Embryo**

**Kernel**



# Types of seeds:

## Kernel

**Typical albuminous seed** →

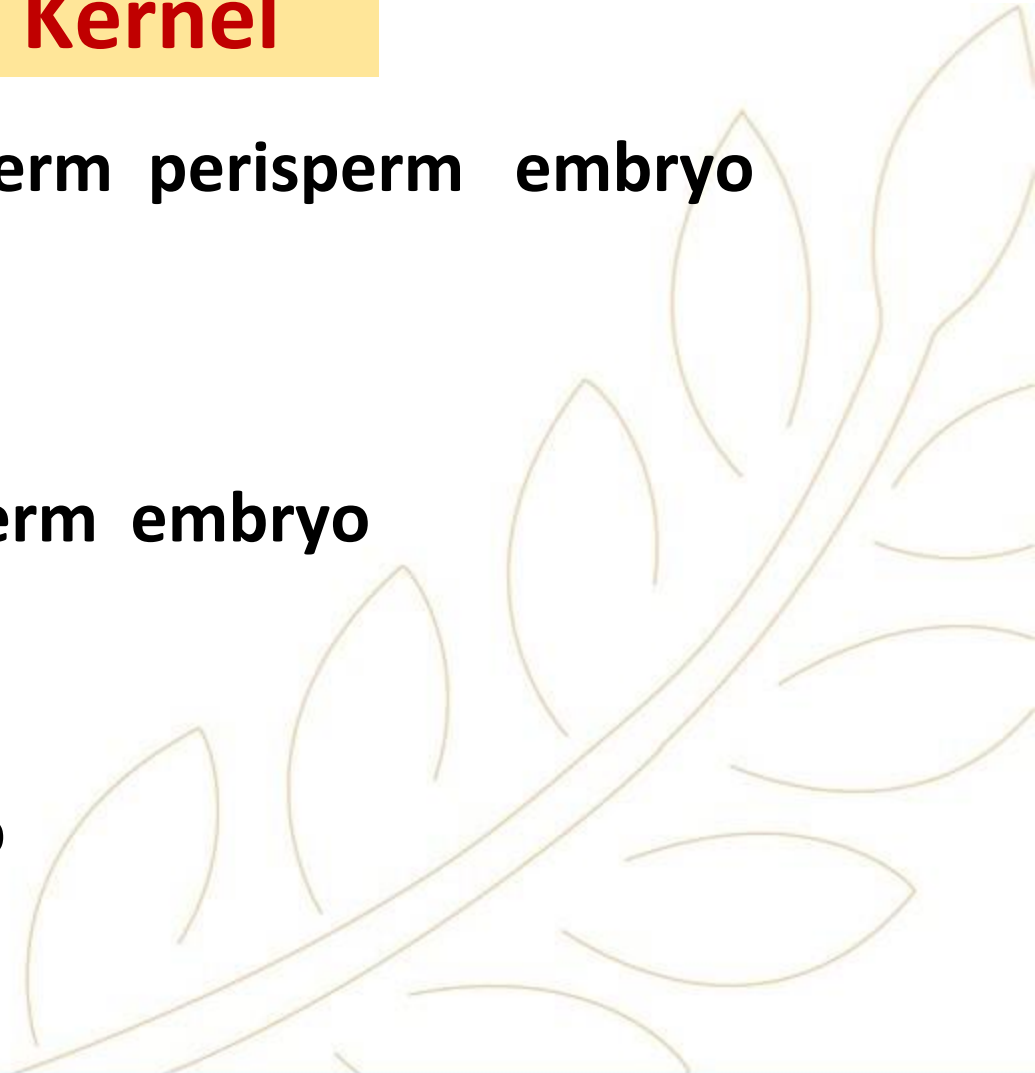
endosperm perisperm embryo

**Albuminous seed** →

endosperm embryo

**Exalbuminous seed** →

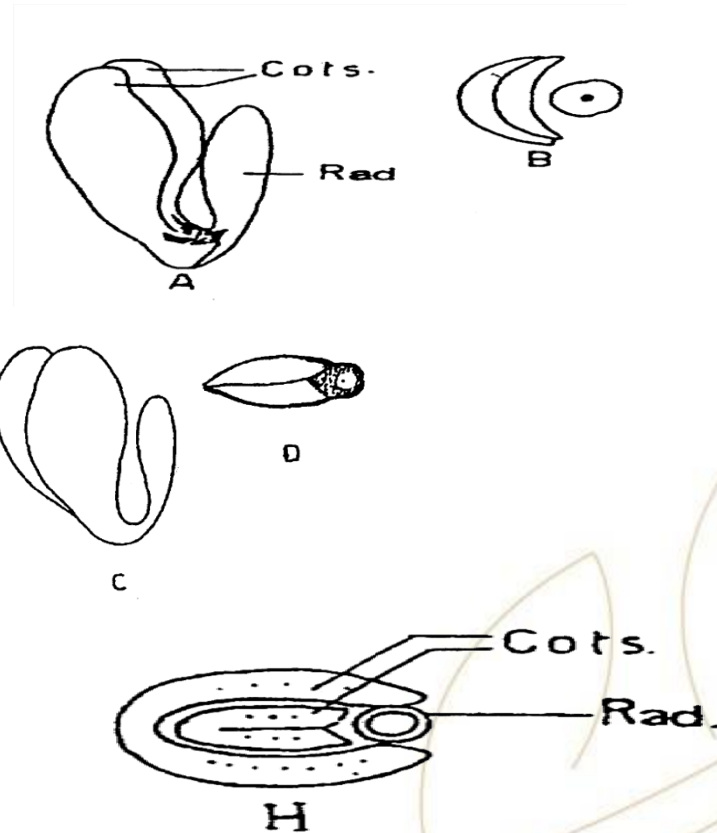
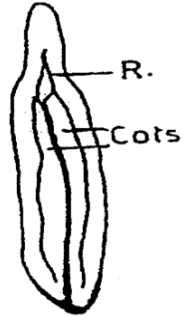
embryo





# Types of Embryo

- **Straight**
- **In accumbent**
- **Accumbent**
- **Orthoplocous**



# Morphology of the seed

**1-Shape**

**2-Color**

**3-Odour**

**4-Taste**

**5-Scars left on the seed**



# Seeds

## 1-Linseed





- **Origin:** It is the dried ripe seeds of *Linum usitatisimum* Family: Linaceae.



*Linum* “linear” → Linin  
*usitatisimum* “the most useful”



## Morphology:

**Shape:** Elongated ovate nearly flate, rounded at one end, pointed at the other end.

**Odor:** Very slight, characteristic when crushed.

**Surface:** Flattened

**Color:** Glossy brown

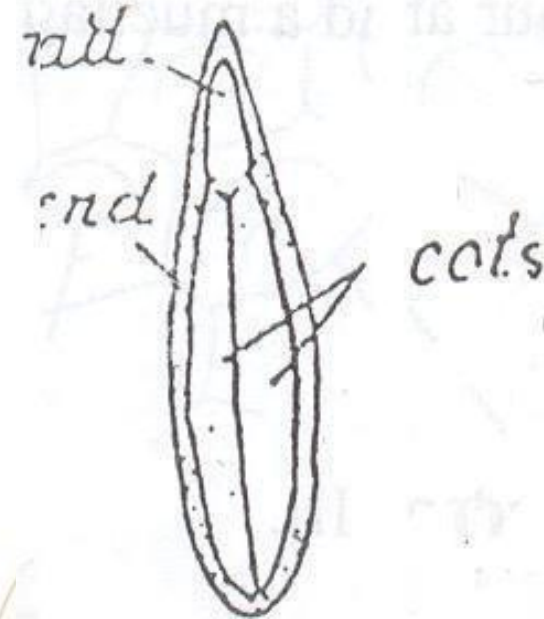
**Taste:** Mucilaginous oily taste



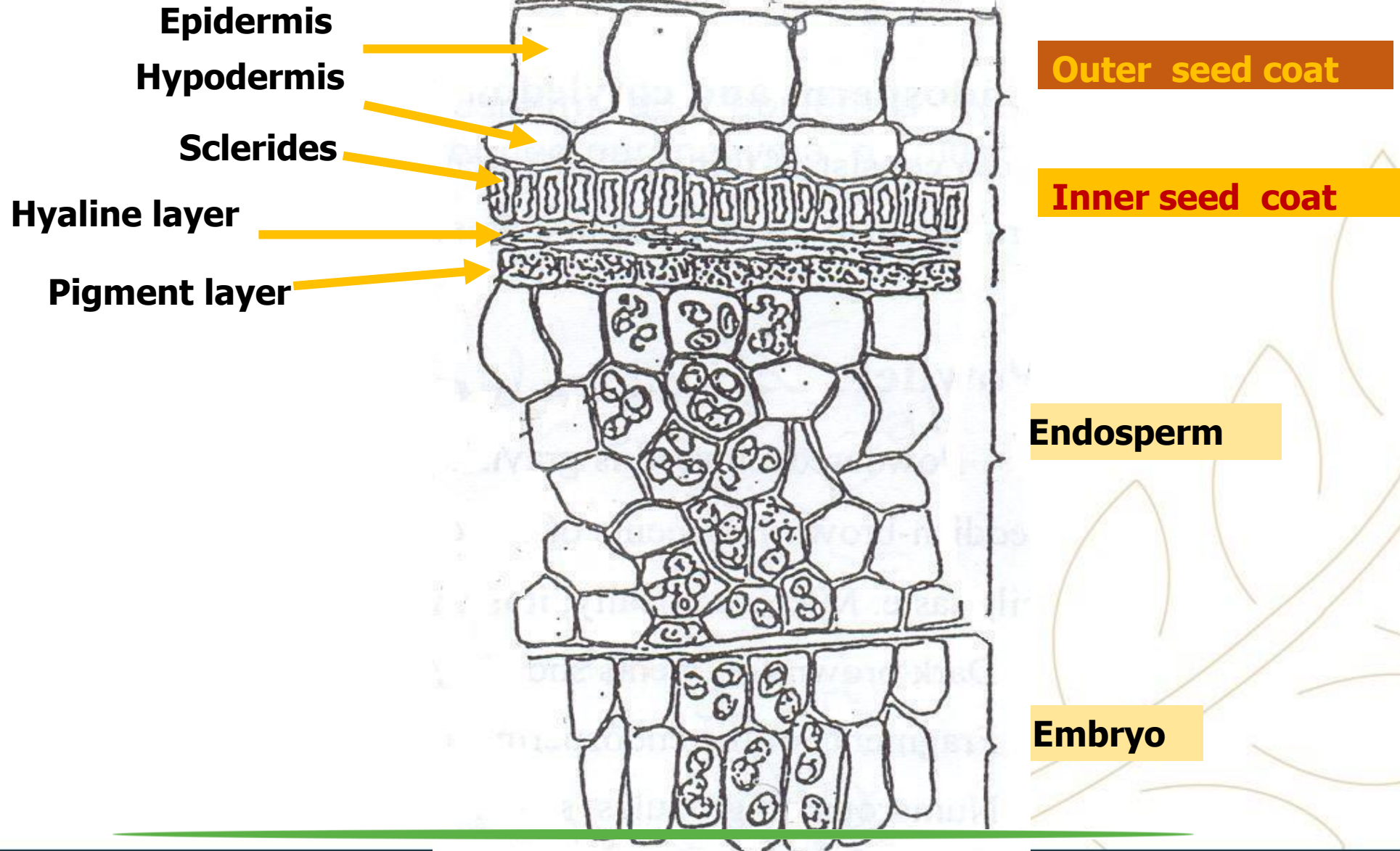


## Morphology:

- **Testa:** Smooth, shining, pitted.
- **Hilum and micropyle:** Distinct as a small hollow on the edge near the pointed end.
- **Raphe:** Distinct yellow ridge from the hilum to the rounded end.
- **Ovule:** Anatropous ovule



# T.S.



## Powder:

**Condition:** Fine powder

**Color:** Yellowish brown with dark particles

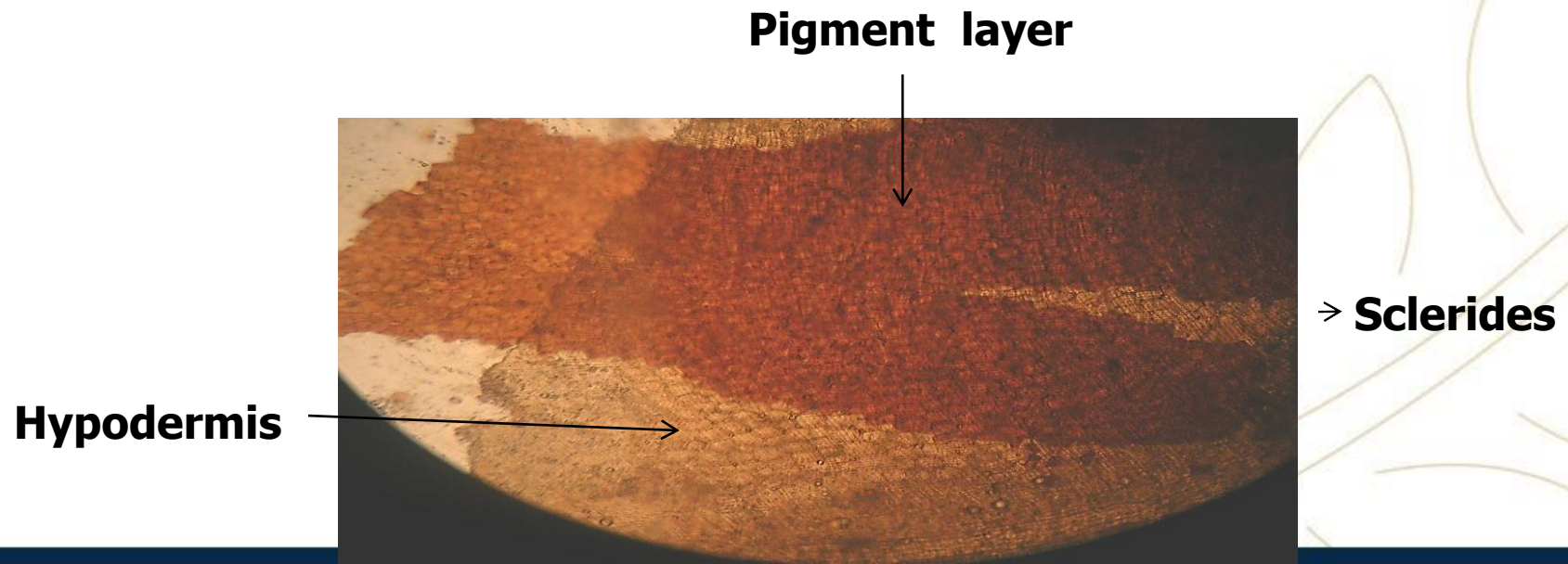
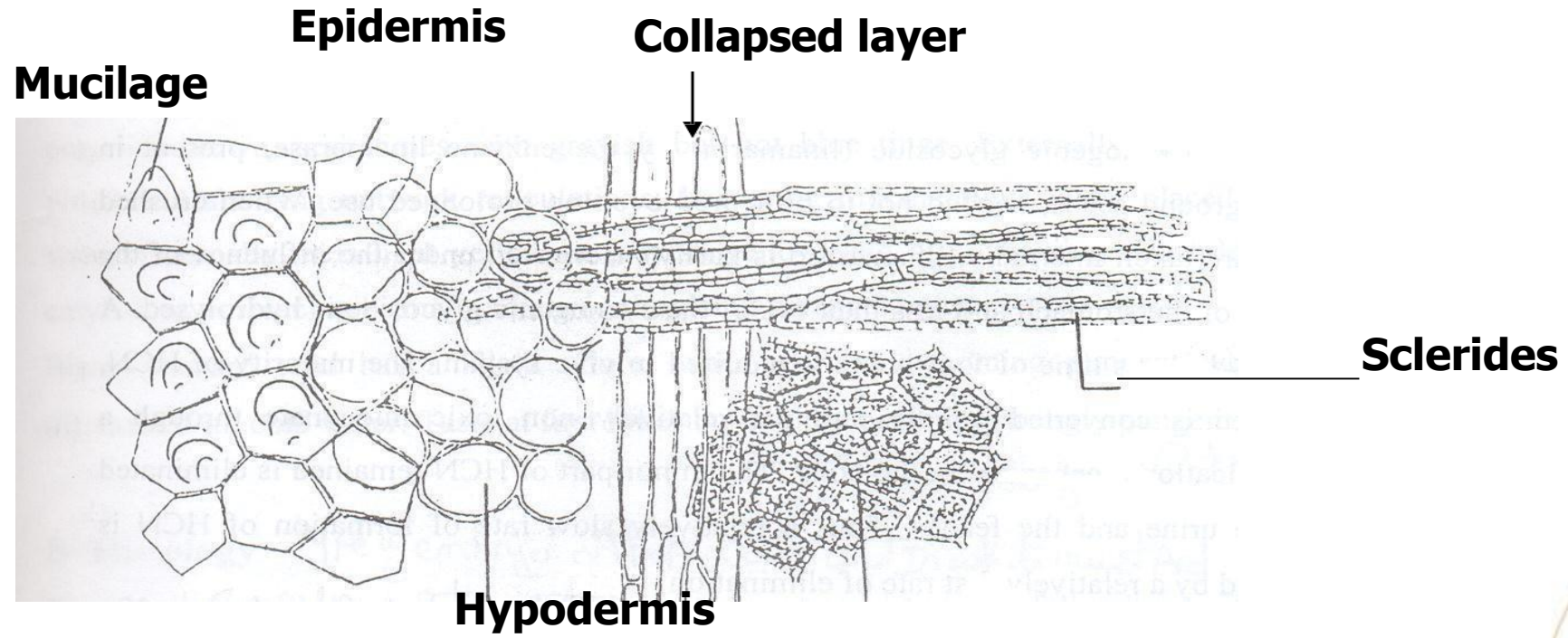
**Odor:** Oily characteristic odor of linseed

**Taste:** Mucilaginous oily





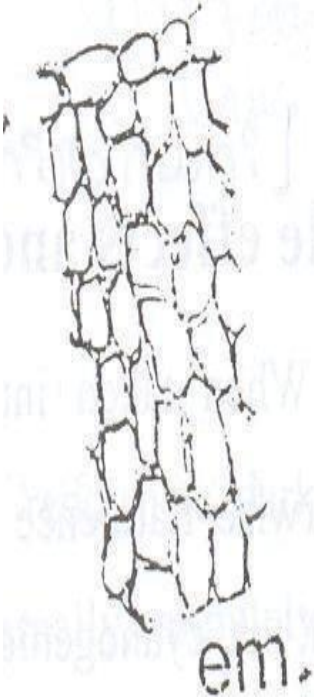
# Key Elements:



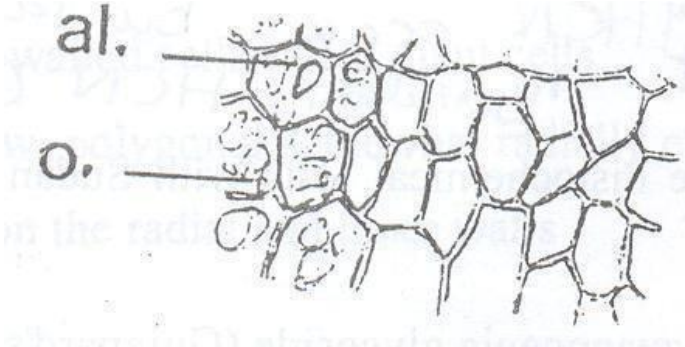
**Key Elements:**



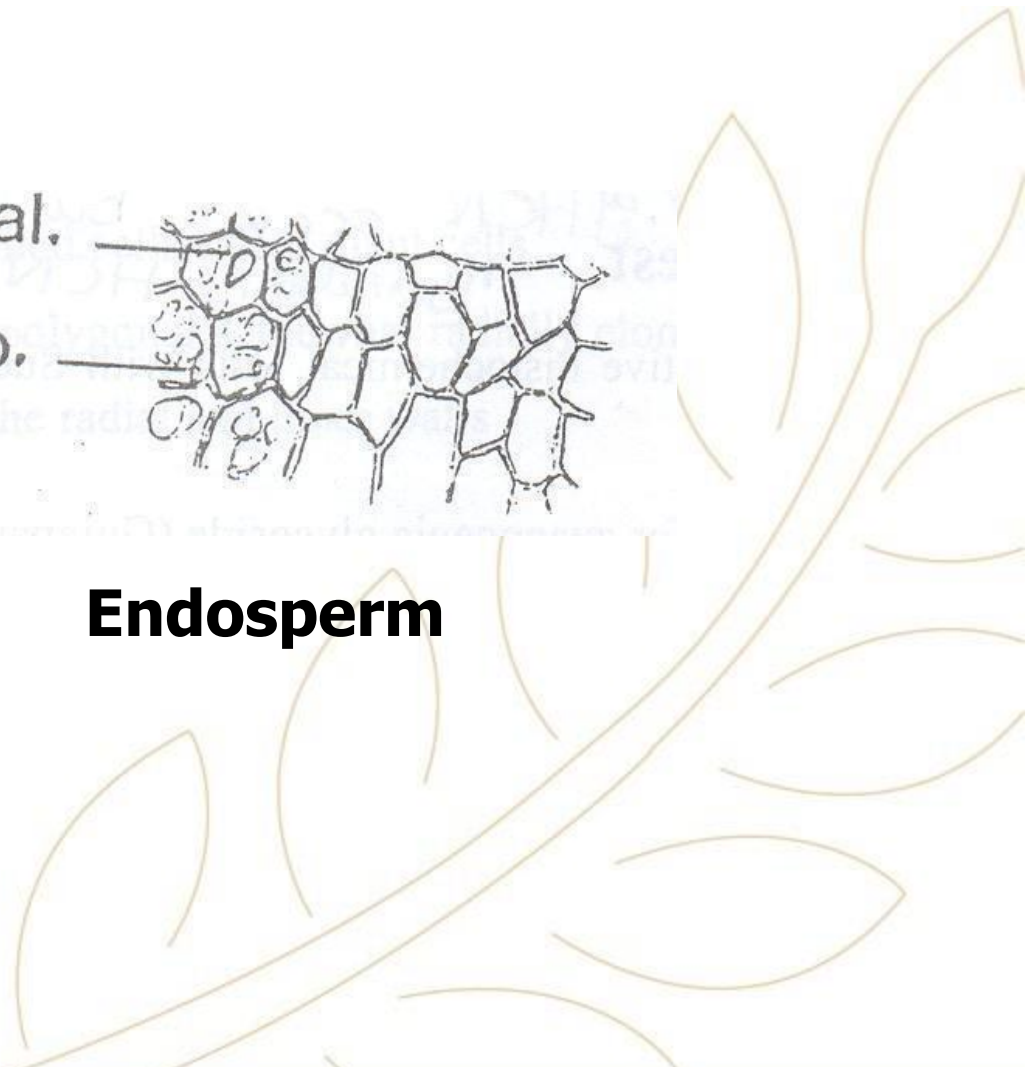
**Pigment layer**



**Embryo**

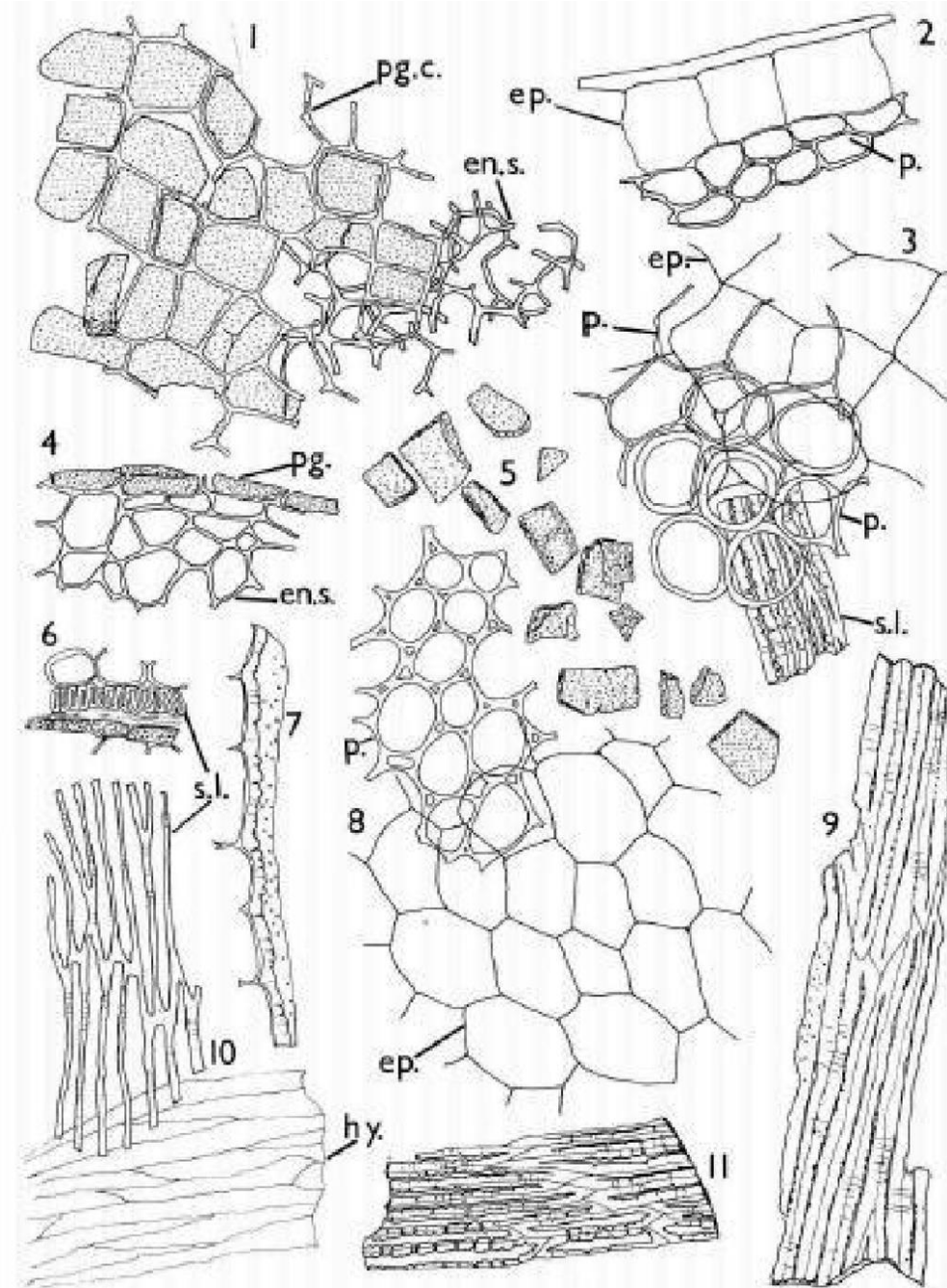


**Endosperm**





# Key Elements:



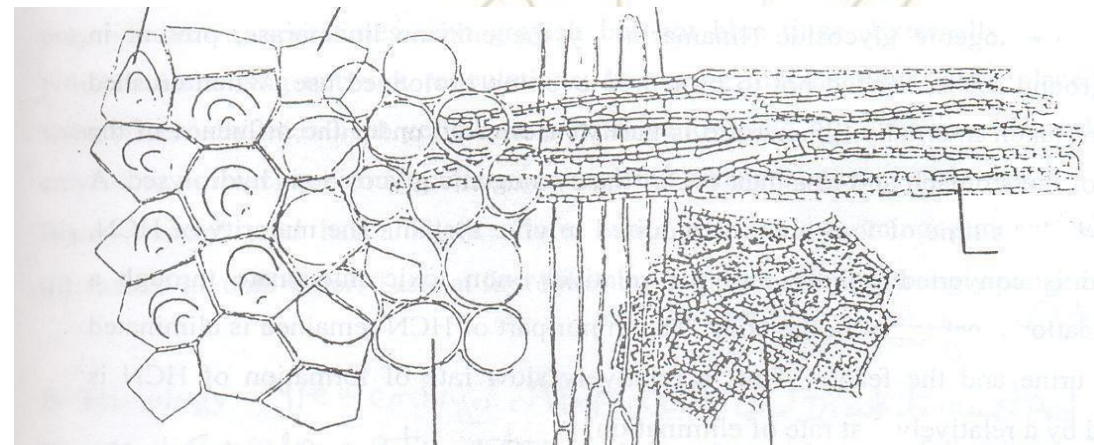


# Microscopical Characters:

**Mount in KOH:** all key elements except epidermal cells

**Mount in phloroglucinol :** Sclerides → will turn red, Epidermal cell → Ruthenium red is used to detect it

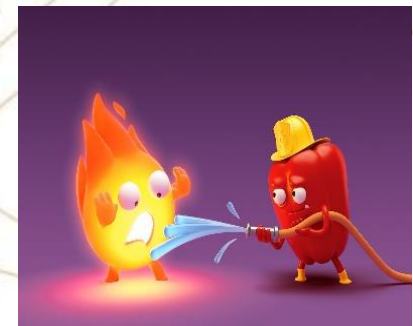
**Mount in water:** Starch (undeveloped seed)



## Uses

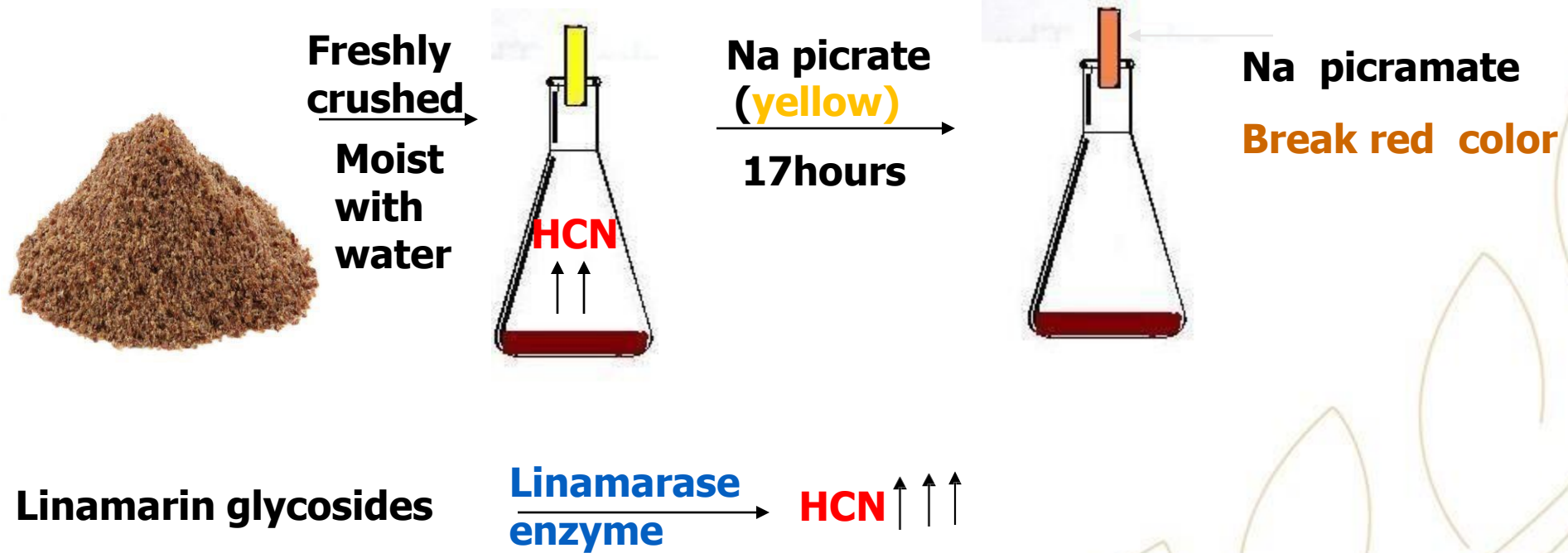
1. Used in patients with **rheumatoid arthritis** and **psoriasis**.
2. **Demulcent** in acute or chronic gastritis
3. **Bulk laxative** in habitual constipation, due to its mucilage & fixed oil which have a lubricant effect.
4. **Anti-inflammatory**, Omega-3-fatty acids have demonstrated effect due to reduced production of inflammatory mediators).
5. **Heart protecting against angina pectoris**, since Omega-3 fatty acids reduce the whole Blood viscosity & lower cholesterol level.
6. **Externally**, used as an **emollient** in poultices for boils, carbuncles and other skin infections.

Rheumatoid Arthritis in the Hand



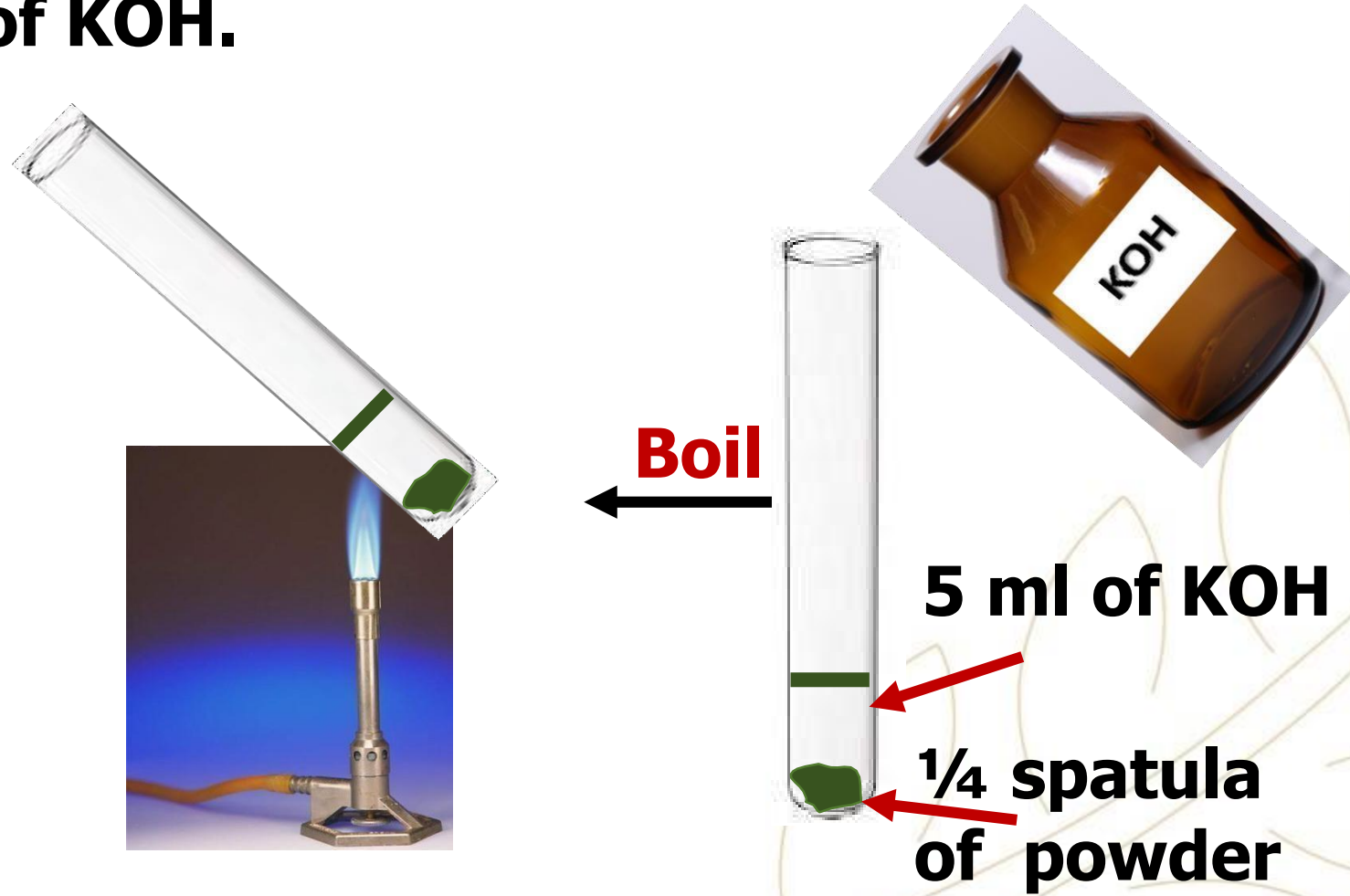
# Chemical test:

## General test for cyanogenic glycoside:



## Practical work:

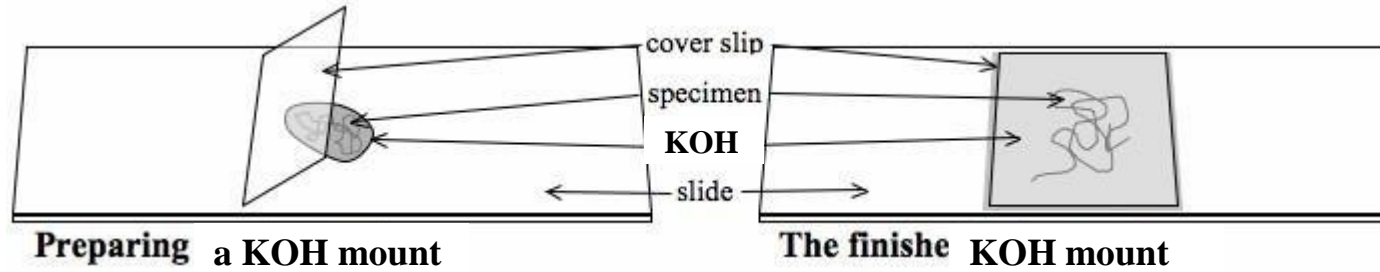
**1- Boil a quarter spatula of the powdered seed in a bout 5 ml of KOH.**





# Practical work:

## 2- Prepare your slide and check the key elements.



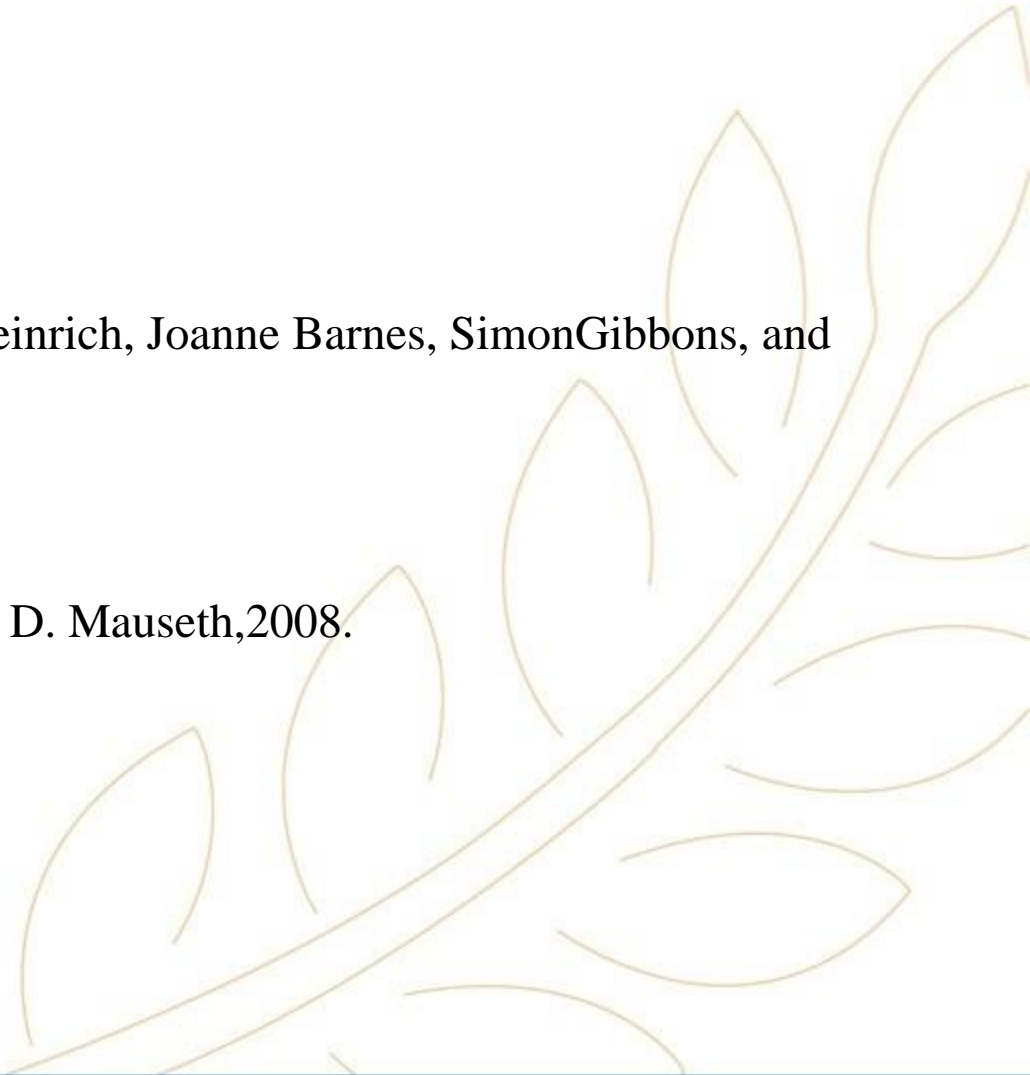
P.S.

- Keep your work place and tools clean.
- Dispose the left KOH in the container not in the sink.



# References:

1. Trease & Evans' Pharmacognosy by William Charles Evans, 2002.
3. Fundamentals of Pharmacognosy and Phytotherapy by Michael Heinrich, Joanne Barnes, Simon Gibbons, and Elizabeth M. Williamson, 2004.
2. Botany :An introduction to Plant Biology, Third edition by James D. Mauseth, 2008.



## Useful links:

<http://www.hort.purdue.edu/newcrop/med-aro/default.html>

<http://www.herbmed.org/>

<http://www.danish-schnapps-recipes.com/plants.html>

<http://www.botanical.com/>





Established by Dr.Nawal El Degwi  
October Univeristy for Modern Sciences and Arts  
جامعة أكتوبر للعلوم الحديثة والآداب

# Thank You!

**THE FIRST BRITISH HIGHER EDUCATION IN EGYPT**

26th July Mehwar Road Intersection with Wahat Road, 6th of October City, Egypt

Tel: 00238371113 Postal code: 12451 Email: [info@msa.edu.eg](mailto:info@msa.edu.eg)

Hotline: 16672 Website: [www.msa.edu.eg](http://www.msa.edu.eg)